

vimbal



The World's First **Neurologically Personalized** Learning Environment

Joshua Arnall | josh@vimbal.ai | vimbal.ai | +1 (628) 221 9224



[Book a demonstration here](#)

Learn at the speed of you

The *Problem* with Modern Learning



Declining *Focus*

Constant **notifications**, social media, messaging, emails, & calls fragment attention



Reduced *Comprehension*

Declining focus leads to **reduced comprehension** & reduced **engagement** in education and training



The Future *Risk*

Those with **mental health & neurodivergent** conditions are marginalized as learning environments fail to adapt

The *Solution* is Neuro-Personalization

The vimbai *Experience*

Immersive Spatial Computing

Virtual learning environment
that **Eliminates Distraction**

Flow State Induction

UX a **Deep Meditative &**
Hyper-focused learning state

Patented **Neuro-Personalization**

Learning environment **tailored**
to **users neurological** profile



The *Solution* is Neuro-Personalization

Creating Real *Results*



Accelerate Learning

Vimbal speeds up
Learning by 3-5x

Enhanced Retention

Vimbal improves
Retention by 35%

Increased Grades

Vimbal increases
Grades by ~19% points

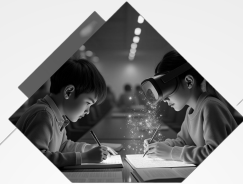
How vimbal works? Current *MVP* Environments



vimbal
Meditation

Immersive
Great Barrier Reef
dive experience
combining

Neuroscience for
deep meditation



Accelerated
Learning

Deep Meditation
combining robust

Patented Neurological
Colors, Sounds, & Motion

Then Hypnotic Speed



vimbal
Xpand

Hyper-focused Flow State

Accelerated Learning &
increased comprehension

"It felt like I tuned out, but
the answers just came to me"

How vimbal will work! – In Development

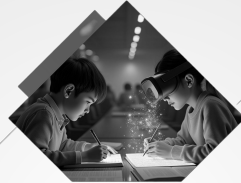


Agentic Neuroscientist

Dynamic AI Control of Neuro-Environment

Via EEG Wearable to

Monitor Brain Activity



Agentic Tutor

20 Stage AI Tutor based in

Neural Linguistic Programming (NLP)

Socratic Teaching Method



LLM to Brain Interface

Vimbal = 400–500 WPM*

LLM = 300 WPM

Avg. Human = 150 WPM

Triple Human LLM Intake

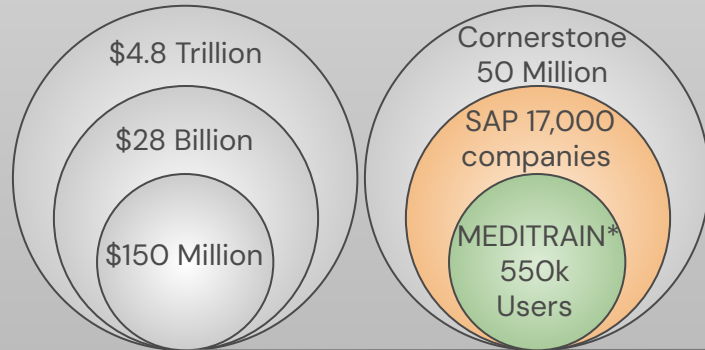
*Words Per Minute

Learning Management System *Market* is Massive

LMS are the largest GTM for users globally

Workplace

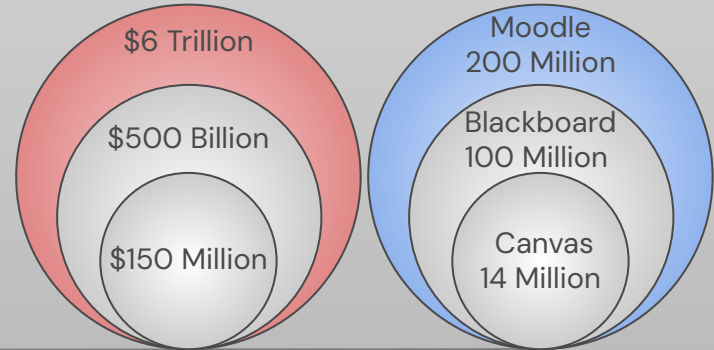
Global OHS \$4.8 Trillion in 2023
Global OHS \$8.5 Trillion by 2032
6.6% CAGR



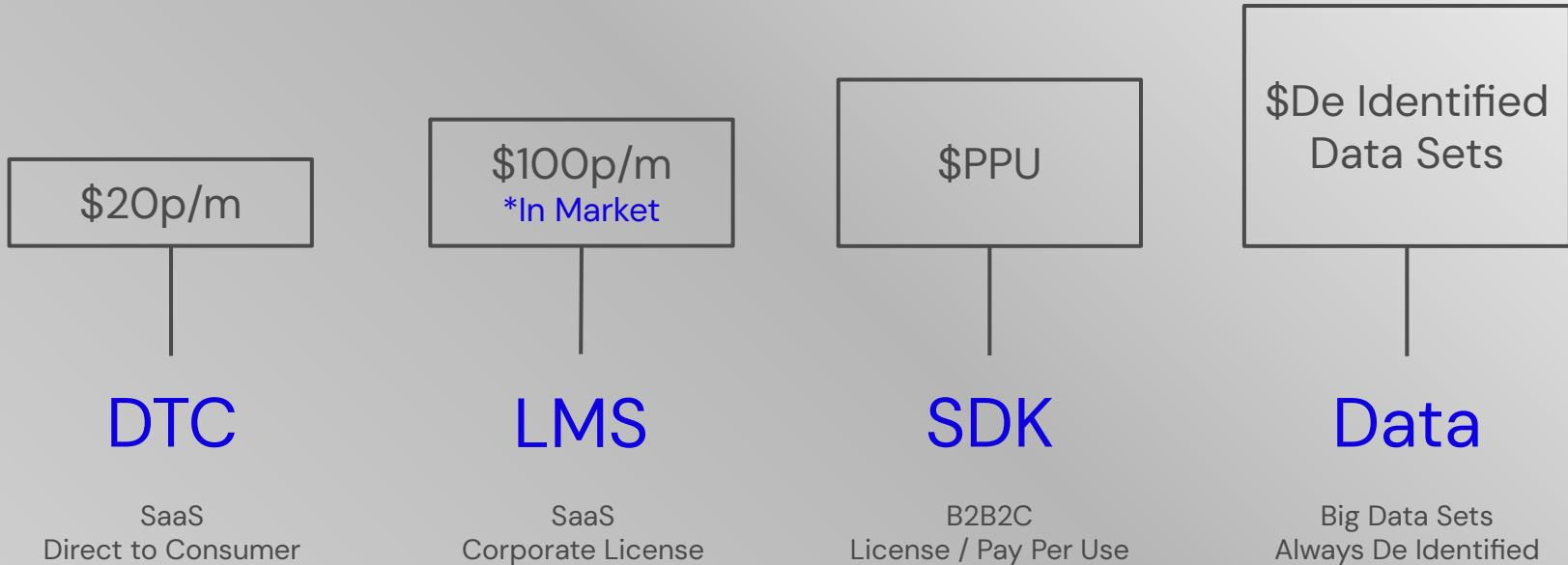
*Paid Pilot April 2025

Education

1.5 Billion User market, with
\$6 Trillion in ARR, and
4-6% CAGR



Business Model



*Australian Mining Industry

Founder Story

Joshua Arnall



High School Dropout
/ Mining Electrician



Spine & Traumatic
Brain Injuries (TBI)



Neuro-hacked self
Through Law School



Built Neuro-hack into a
learning platform

Team



Dan Flanagan
CTO

Multi-Founder CEO

Product / Qualcomm /
ClayAIR - 2019-2023

Advisor/Mentor
UC. San Diego
Mucker Capital
2015-2019



**Jose Herrera
Perea / Chair**

CEO; Non-Exec Director;
C-Level Advisor; Private
Equity & Venture Capital

Advisory / CEO - GooRoo;
MD - Open Colleges;
Exec-GM - Open Universities



Mark Luhov
(MD) / Advisor

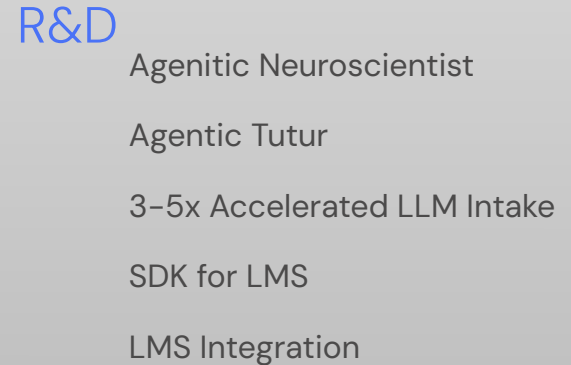
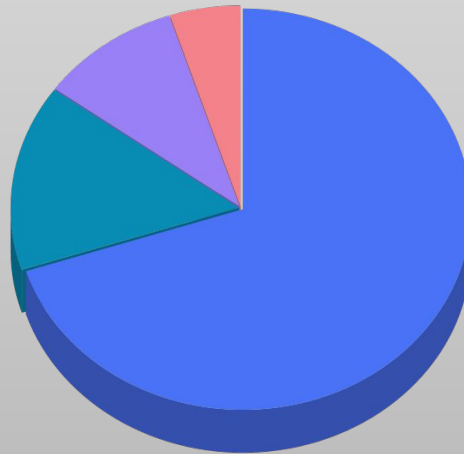
Founder & Principal;
BioEngenuity;
2018 to Present

Co-Founder & COO;
Plasbotics; 2021-2024

Advisors

Raise & Use of Funds

\$10 Million Seed



*\$1 Million Pre-Seed (Strategic Corporate)

vimbal



The World's First **Neurologically Personalized** Learning Environment

Joshua Arnall | josh@vimbal.ai | vimbal.ai | (628) 221 9224



[Book a demonstration here](#)

Learn at the speed of you